

CONTROVERSO

Modello e design registrati, brevetto depositato
Registered model and design, patent pending

Articolo: **CONTROVERSO**

Materiale: Marmo Carrara

Troppopieno: NO

Peso lordo: kg 396 ca.

Peso netto: kg 361 ca.

Dimensione imballo: cm 54 x 60 x 106

Descrizione: Lavabo da terra in pietra con scarico a pavimento, completo di piletta con scarico libero, sifone e tubo flessibile.

Article: **CONTROVERSO**

Material: Marmo Carrara

Overflow: NO

Gross weight: kg 396 ca.

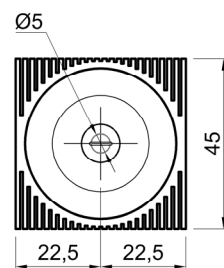
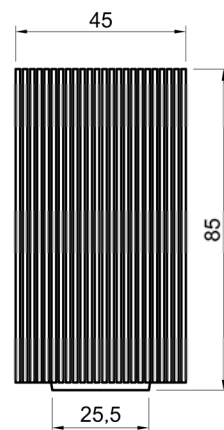
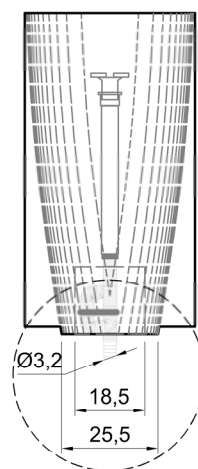
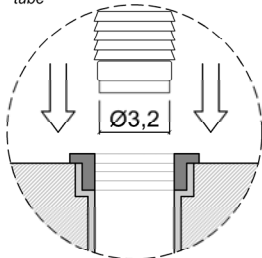
Net weight: kg 361 ca.

Packing dimensions: cm 54 x 60 x 106

Description: Freestanding stone sink, complete with drain pipe fitting and open plug, trap and flexible hose.



Predisporre scarico a pavimento per tubo Ø3,2cm
Prepare the floor drain for a Ø3,2cm tube



ATTENZIONE

Si declina ogni responsabilità relativa ad eventuali inesattezze contenute in queste istruzioni dovute ad errori di trascrizione.

WARNING

We decline all responsibility and eventual inaccuracy contained in the instructions due to transcript errors.

ATTENTION

Nous ne nous retenons pas responsable des erreurs éventuelles contenu dans ces instructions dues à une mauvaise transcription.

ACHTUNG

Für eventuelle Fehler bei der Übersetzung der technischen Liste weißt Antonio Lupi Design S.p.A jegliche Verantwortung von sich.

ATENCIÓN

Declinamos cualquier responsabilidad por eventuales inexactitudes contenidas en estas instrucciones debidas a errores de transcripción.

ВНИМАНИЕ

Компания снимает с себя любую ответственность за возможные неточности, содержащиеся в данных инструкциях и возникшие при перепечатке материалов.

antoniolupi

73

VIA MAZZINI
75

Antonio Lupi Design S.p.A.
via Mazzini 73/75 - 50050 Stabbia
Cerreto Guidi (Firenze) - Italy
T +39 0571 586881_95651
F +39 0571 586885
www.antoniolupi.it
lupi@antoniolupi.it