

effe

PERFECT WELLNESS  
BY EFFEGIBI

# BodyLove S

/ sauna /

## BodyLove S

Design:

Rodolfo Dordoni,  
Michele Angelini

BodyLove S fa parte del sistema modulare progettato da Rodolfo Dordoni e Michele Angelini: è una sauna dotata di grande eleganza, curata nei minimi dettagli, che si integra molto facilmente con diversi tipi di ambiente, dalla zona living alle spa private o pubbliche.

> Sauna dal design unico, in grado di conferire all'ambiente forte personalità e grande eleganza.

> La stufa della sauna di BodyLove è rivestita in ceramica smaltata, con cromie uniche: un materiale di pregio che esalta la morbida bellezza del legno.

BodyLove S is part of the modular system designed by Rodolfo Dordoni and Michele Angelini: no detail of this elegant sauna has been left to chance and it blends effortlessly into any environment, from living areas to private or public spas.

> This sauna, with its unique design, makes a bold, elegant statement in any room.

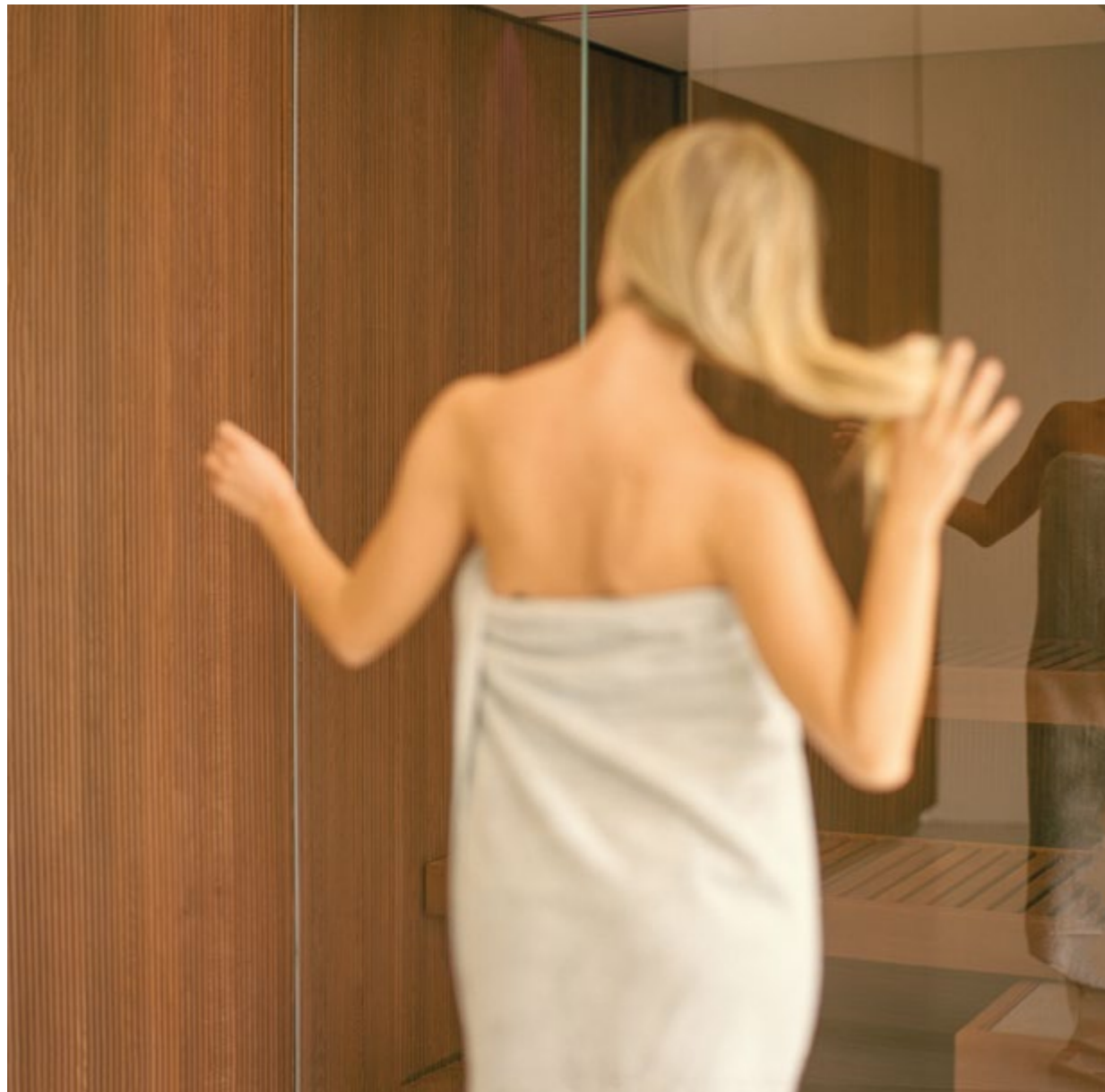
> The BodyLove sauna heater is covered in glazed ceramic in unique colour combinations, a luxury material that enhances the soft beauty of the wood.



Sauna: heat-treated solid wood with exterior panelling.



Sauna: heat-treated solid wood with exterior panelling.



Led RGB lighting system,  
5 fixed colours, 4 dynamic  
cycles and white light.

Control panel with brushed  
steel finish.





The heater is covered in glazed ceramic in unique colour combinations.



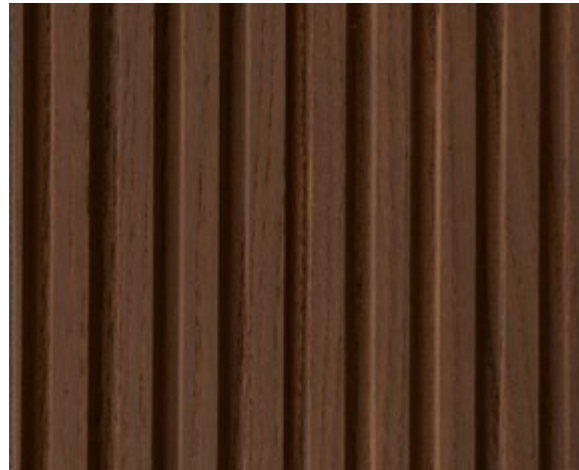
## Materials



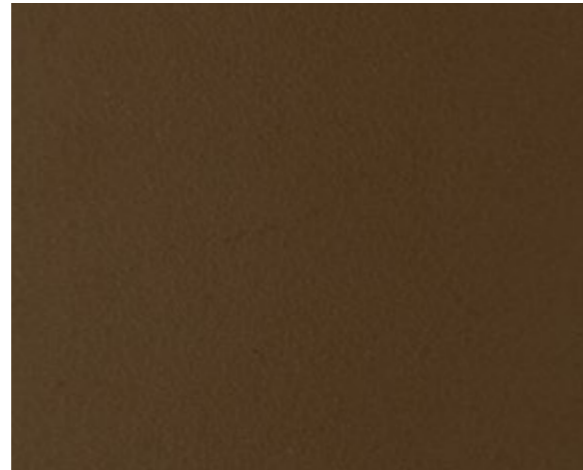
**Hemlock Canadese - Texture BodyLove**  
Interno sauna, boiserie  
**Canadian Hemlock - BodyLove Texture**  
Sauna inside, panelling



**Alluminio bronzo**  
Struttura  
**Aluminium bronze**  
Frame



**Legno Massiccio Termotrattato - Texture BodyLove**  
Interno sauna, boiserie  
**Heat-Treated Solid Wood - BodyLove Texture**  
Sauna inside, panelling



**Alluminio bronzo**  
Struttura  
**Aluminium bronze**  
Frame

## Translations

### FRANÇAIS

#### BodyLove S

BodyLove S fait partie du système modulaire conçu par Rodolfo Dordoni et Michele Angelini : il s'agit d'un sauna d'une grande élégance, soigné dans les moindres détails, qui s'intègre facilement à différents types d'environnement, du salon aux spas privés ou publics.

#### Caractéristiques :

Le poêle du sauna de BodyLove est revêtu en céramique émaillée, avec des couleurs uniques : un matériau précieux qui exalte la douce beauté du bois.

Un sauna au design unique, en mesure de conférer à l'environnement une forte personnalité et une grande élégance.

### DEUTSCH

#### BodyLove S

BodyLove S ist Teil des von Rodolfo Dordoni und Michele Angelini entwickelten modularen Systems. Diese sehr elegante Sauna überzeugt durch die Liebe zum Detail und lässt sich leicht in verschiedene Umgebungen einfügen – vom Living-Bereich bis zu den privaten oder öffentlichen SPAs.

#### Beschreibung:

Eine Sauna mit einzigartigem Design, die dem Raum eine starke Persönlichkeit und große Eleganz gibt.

Der Saunaofen von BodyLove ist in emaillierter Keramik und einzigartigen Farben gekleidet: ein edles Material, das die Weichheit des Holzes unterstreicht.

### ESPAÑOL

#### BodyLove S

BodyLove S forma parte del sistema modular diseñado por Rodolfo Dordoni y Michele Angelini. Se trata de una sauna de gran elegancia, cuidada en los mínimos detalles y que se integra muy fácilmente con diversos tipos de ambiente, desde la zona de día a las SPA privadas o públicas.

#### Características:

Sauna de diseño único, capaz de dar al ambiente una fuerte personalidad y una gran elegancia.

La estufa de la sauna de BodyLove está revestida con cerámica esmaltada, con colores únicos: un material de valor que destaca la suave belleza de la madera.

### РУССКИЙ

#### BodyLove S

BodyLove S является частью модульной системы, разработанной архитектором Родольфо Дордони и дизайнером Микеле Анджелини. Продуманная до малейших деталей система легко интегрируется в любой интерьер: начиная от гостиной и заканчивая домашним или коммерческим спа-салонам.

#### Характеристики:

Сауна с уникальным дизайном придаст любому интерьеру яркую индивидуальность и благородную элегантность.

Каменка сауны BodyLove отделана эмалированной керамикой уникальных оттенков: этот благородный материал подчеркнет природную красоту дерева.

### 中文

#### BodyLove S

BodyLove S 属于 Rodolfo Dordoni 和 Michele Angelini 设计的模块化系统: 这款优雅的桑拿房有着精心设计的细节, 可以轻松融入不同的安装环境, 不论是个人的生活区域, 还是私人或开放的水疗空间。

#### 特点:

这款桑拿房有着独特的设计, 在任何空间中都能展现出大胆而优雅个性。BodyLove 系列桑拿炉外饰面选用色彩独特的上釉的瓷砖: 这种优质材料更加凸显出木材的柔美。

#### Materiali

##### Sauna:

Hemlock canadese;  
Legno massiccio termotrattato.  
Piastrabile internamente anche  
con altri rivestimenti.

#### Componenti Sauna

Vetri extrachiari 10 mm.  
Panche in legno.  
Stufa con pietre.  
Copristufa in ceramica smaltata.  
Pannello di controllo finitura acciaio spazzolato.  
Mastellino e mestolo in legno.  
Clessidra.  
Impianto elettrico canalizzato.  
Illuminazione con cromoterapia a Led RGB,  
5 colori fissi, 4 cicli dinamici e luce bianca.

#### Materials

##### Sauna:

Canadian Hemlock;  
Heat-treated solid wood.  
It is possible to apply different  
claddings internally.

#### Sauna includes

Clear tempered glass 10 mm.  
Wooden benches.  
Heater with stones.  
Ceramic tiles cover heater.  
Control panel with brushed steel finish.  
Wooden bucket and ladle.  
Hourglass.  
Electrical system with protected cable ducts.  
Led RGB lighting system, 5 fixed colours,  
4 dynamic cycles and white light.

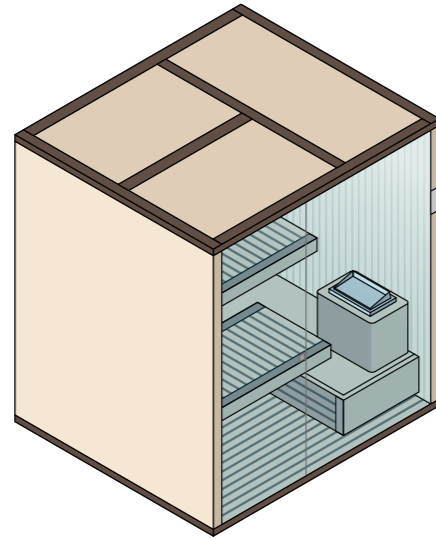
#### Dimensioni

##### Dimensions

BodyLove S  
200 x 176 x h 220 cm  
8,0 kW max

Su misura

Custom size



**effe**

PERFECT WELLNESS  
BY EFFGIBI

The logo for 'effe' is centered on the right side of the page. It features the brand name 'effe' in a large, white, lowercase sans-serif font. Above the 'e's, the words 'PERFECT WELLNESS' are written in a smaller, uppercase font, following the curve of a semi-circle. Below the brand name, the words 'SAUNA' and 'HAMMAM WATER' are written in a similar font, also following a curve. In the center of the logo, there are three icons: a sun, a water drop, and a steam icon, each connected to the central text by thin lines.