

## MISCELLANEOUS

Z9502P

Sifone. / Bottle trap.



Sifone da 1 ¼" senza piletta.

1 ¼" bottle trap without plug.

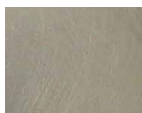
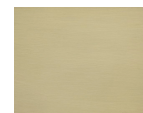
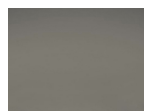
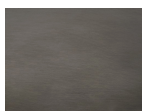
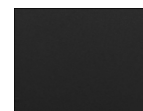
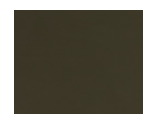
## MISCELLANEOUS

Z9502P

Finiture / Finishes



Cromo / Chrome

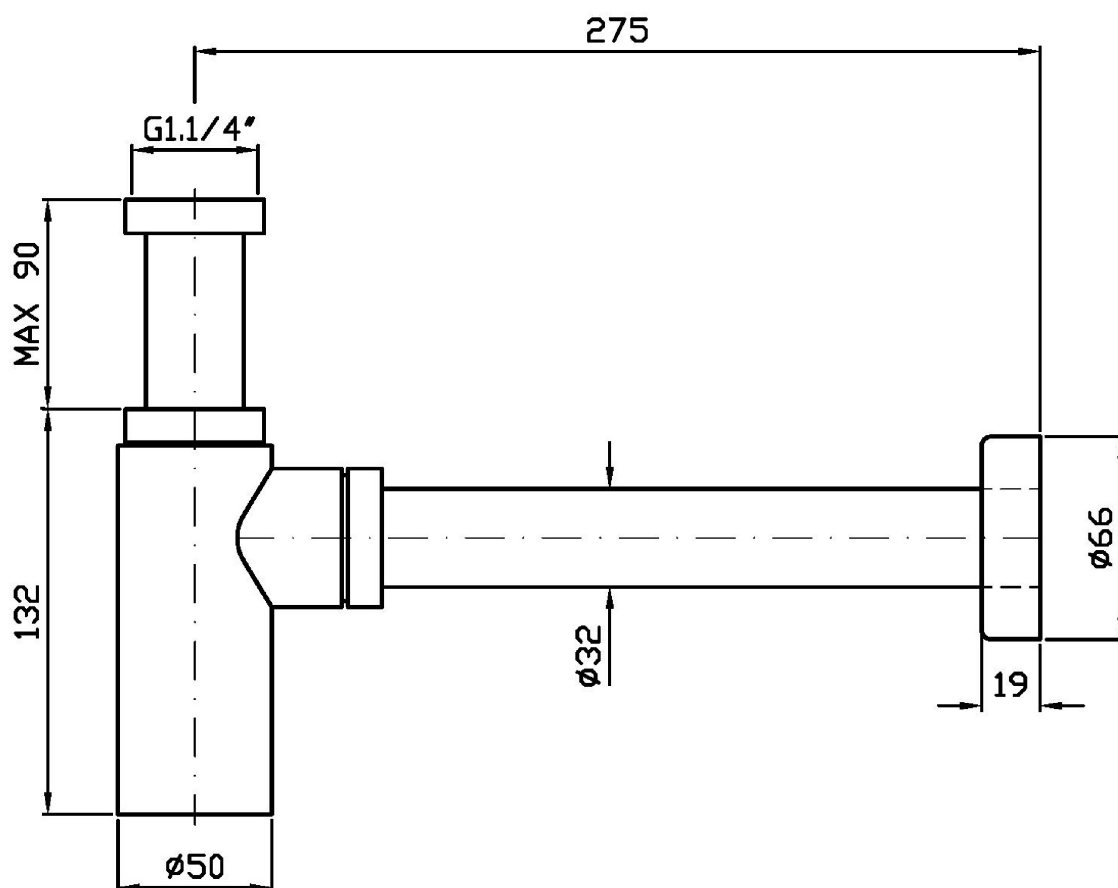
**C3**  
Nickel Spazzolato / Brushed Nickel**C8**  
Nickel Lucido / Polished Nickel**C40**  
Oro / Gold**C41**  
Oro spazzolato / Brushed Gold**C50**  
Metal Black / Metal Black**C51**  
Metal Black spazzolato /  
Brushed Metal Black**W1**  
Bianco Opaco Goffrato /  
Embossed Matt White**N1**  
Nero Opaco Goffrato /  
Embossed Matt Black**N6**  
Nero opaco / Matt black**P21**  
PVD brushed chocolate / PVD  
brushed chocolate**P31**  
Brushed PVD British gold /  
Brushed PVD British gold**P41**  
PVD Oro Spazzolato / PVD  
Brushed Gold**P81**  
Brushed total black PVD /  
Brushed total black PVD**P91**  
Brushed PVD Copper /  
Brushed PVD Copper**J3**  
Glossy gesso / Glossy gesso**K7**  
Pearl cipria / Pearl cipria**R6**  
Pearl chili / Pearl chili**V7**  
Pearl salvia / Pearl salvia**V8**  
Matt mirto / Matt mirto

Note / Notes

## MISCELLANEOUS

Z9502P

Disegno Complessivo / Overall Drawing



## MISCELLANEOUS

Z9502P

Pesi e Misure / Weights and Sizes

Peso ( Kg ) Weight ( lb )	1,03 ( Kg )	2,28 ( lb )
Volume test ( dc3 ) - ( in3 )	4,05 ( dc3 )	247,15 ( in3 )
h ( mm ) - ( in )	70,00 ( mm )	2,76 ( in )
L1 ( mm ) - ( in )	150,00 ( mm )	5,91 ( in )
L2 ( mm ) - ( in )	385,00 ( mm )	15,16 ( in )

