

SHOWER

Z94746

Doccetta a 3 getti. / Handshower 3 jets.



Doccetta a 3 getti in ABS, con sistema anticalcare.
Water Saving - portata d'acqua uguale o inferiore a 9 l/min.

ABS handshower 3 jets, with anti-limescale system.
Water Saving - water flow rate of 9 l/min or less.

Finiture / Finishes



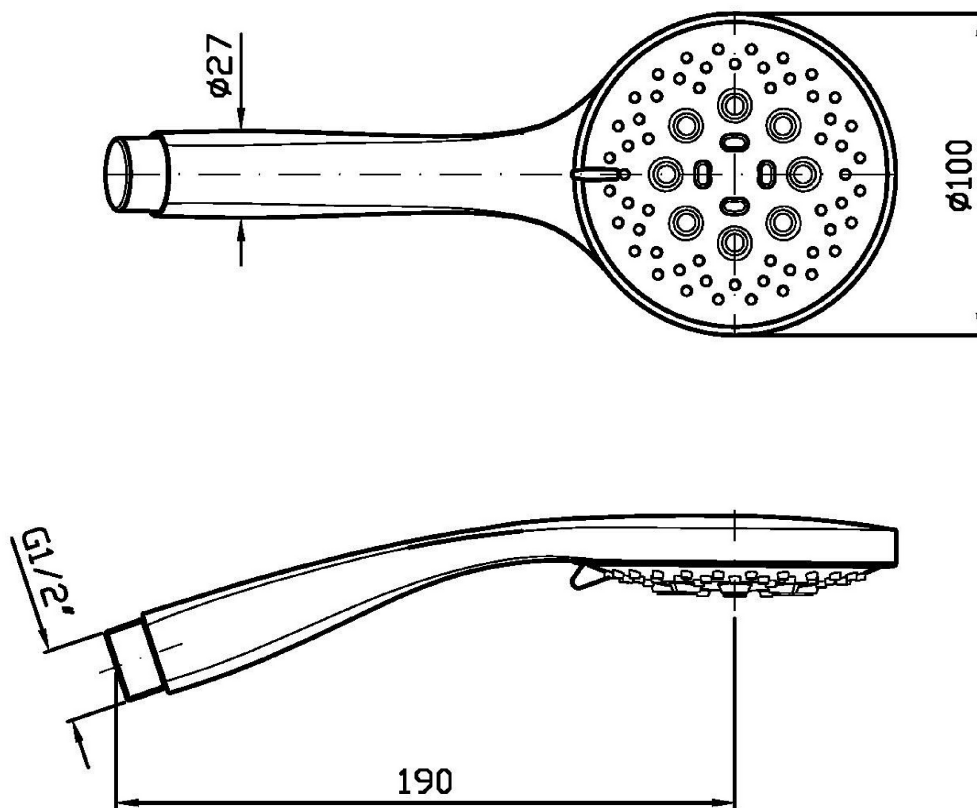
Cromo / Chrome

L5
Blu mediterraneo /
Mediterranean bluC3
Nickel Spazzolato / Brushed
NickelC50
Metal Black / Metal BlackC51
Metal Black spazzolato /
Brushed Metal BlackN6
Nero opaco / Matt black

SHOWER

Z94746

Disegno Complessivo / Overall Drawing

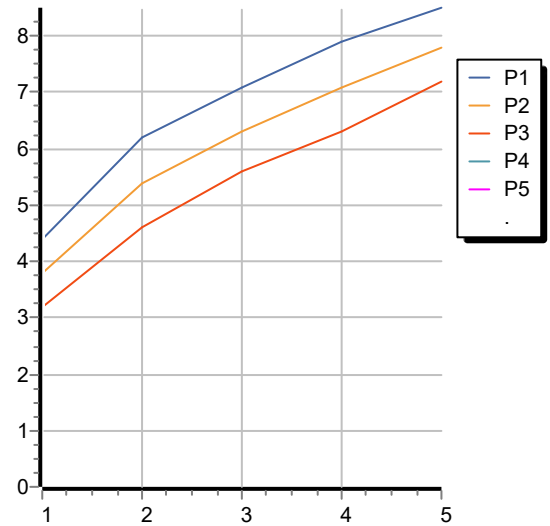


SHOWER

Z94746

Portate / Flowrates (lt/min)

| PRESSIONE PRESSURE | 1 BAR | 2 BAR | 3 BAR | 4 BAR | 5 BAR |
|--------------------------------------|-------|-------|-------|-------|-------|
| GETTO CORPOSO P1 STRONG JET | 3,8 | 5,4 | 6,3 | 7,1 | 7,8 |
| GETTO A PIOGGIA P2 SPRINKLE JET | 4,4 | 6,2 | 7,1 | 7,9 | 8,5 |
| GETTO ENERGETICO P3 ENERGETIC JET | 3,2 | 4,6 | 5,6 | 6,3 | 7,2 |
| P4 | | | | | |
| P5 | | | | | |



SHOWER

Z94746

Pesi e Misure / Weights and Sizes

| | | |
|-------------------------------|---------------|---------------|
| Peso (Kg) Weight (lb) | 0,31 (Kg) | 0,69 (lb) |
| Volume test (dc3) - (in3) | 1,56 (dc3) | 95,20 (in3) |
| h (mm) - (in) | 74,00 (mm) | 2,91 (in) |
| L1 (mm) - (in) | 86,00 (mm) | 3,39 (in) |
| L2 (mm) - (in) | 245,00 (mm) | 9,65 (in) |

