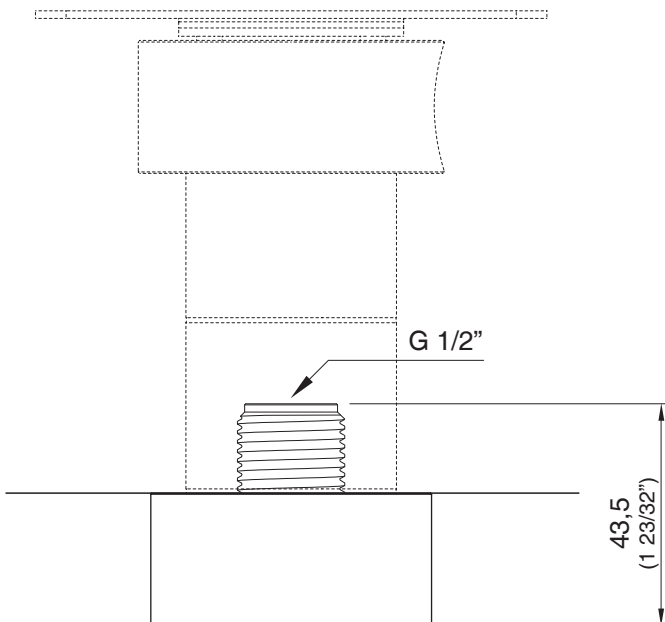
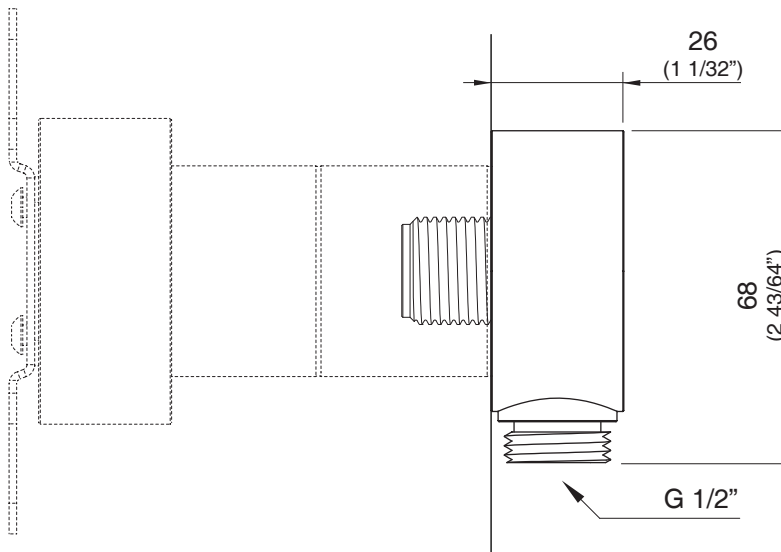


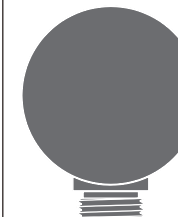
INC03



# PREO1

\_REV10

CEADESIGN STUDIO



## PREO1/CONNECTIONS

AISI 316L STAINLESS STEEL

Preso acqua

Water connection



PRODOTTI CORRELATI / RELATED PRODUCTS

FLX08 - FRE18 - FRE46 - FRE169 - FRE169Y - FRE194

FRE196 - FRE233 - LTZ91 - LTZ93 - NEU32



Staffa ausiliaria per cartongesso / fibrogesso

Auxiliary bracket for plasterboard / fiber-board structures



Staffa ausiliaria per cartongesso / fibrogesso

Auxiliary bracket for plasterboard / fiber-board structures

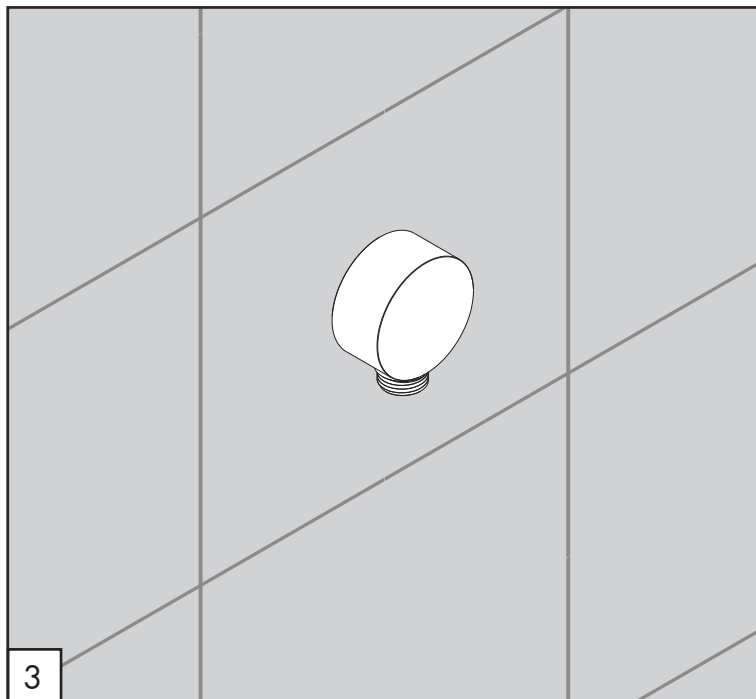
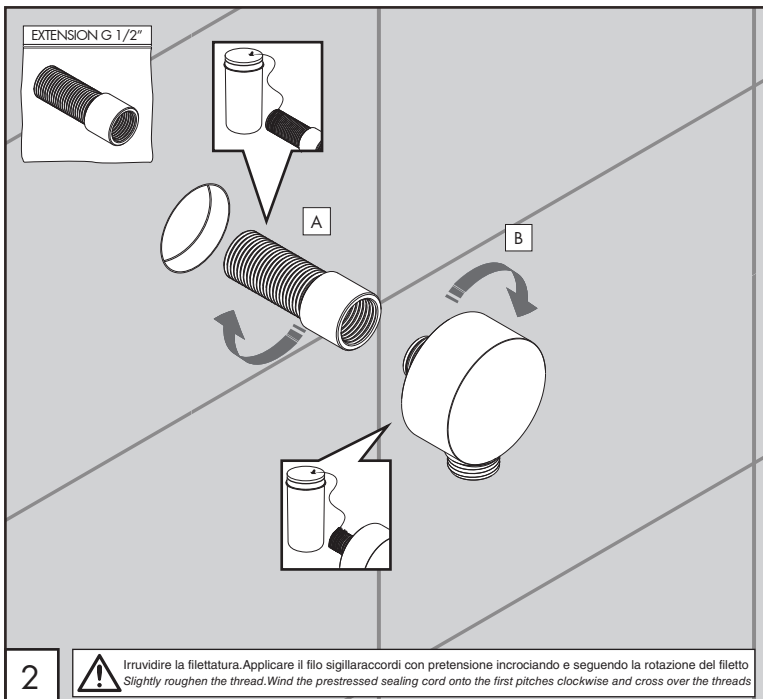
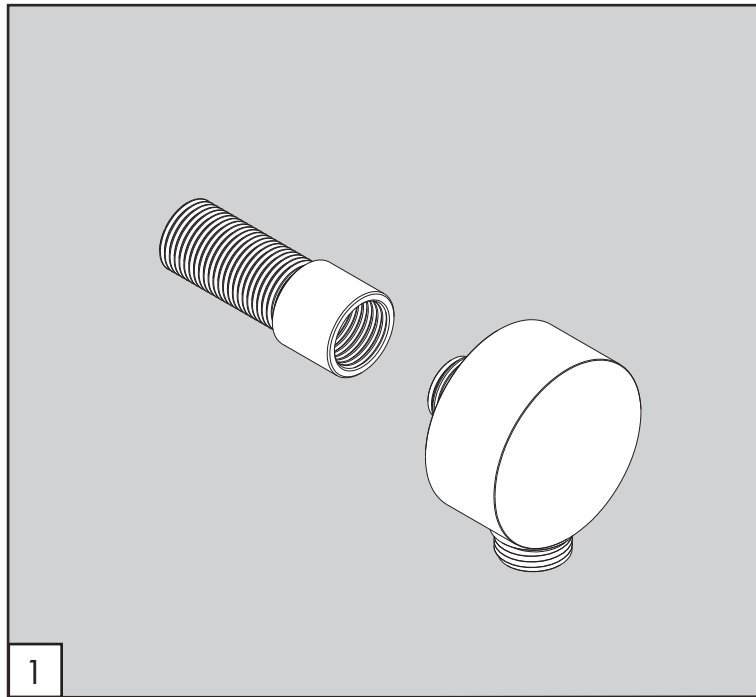
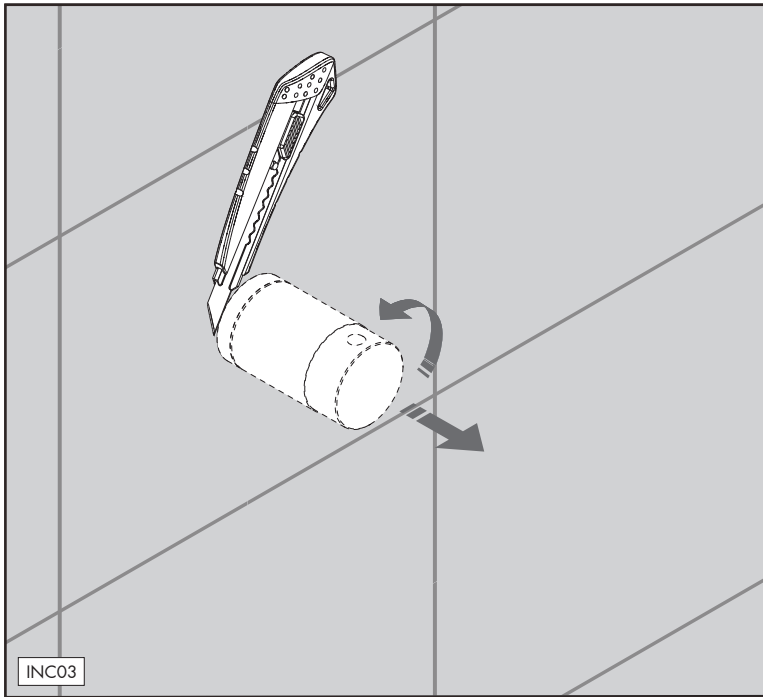
MANUTENZIONE / MAINTENANCE

NON UTILIZZARE DO NOT USE		acido clorico e muriatico chloric and muriatic acid
		acido fluoridrico hydrofluoric acid
		ipoclorito di sodio chlorine bleach
UTILIZZARE TO USE		detergente a pH neutro neutral pH detergent

Questi disegni sono proprietà di CEADESIGN SRL s.u. pertanto non potranno essere utilizzati e/o comunicati a terzi, anche in forma parziale, senza preventiva autorizzazione. CEADESIGN SRL s.u. si riserva il diritto di apportare modifiche ai disegni al fine di migliorare il prodotto.

CEADESIGN SRL s.u. has the property rights on these drawings, therefore they cannot be used and/or transferred to third party, even in partial form, without any prior authorization. Furthermore CEADESIGN SRL s.u. reserves the right to apply any change to these drawings in order to upgrade the product.

ceadesign.it



# PREO1 \_REV10

## AVVERTENZE TECNICHE

Risciacquare bene le tubazioni prima del montaggio.  
In caso di pressioni statiche superiori a 5 bar si raccomanda l'installazione di un riduttore di pressione per evitare danni al prodotto.

## TECHNICAL WARNINGS

The pipes have to be rinsed thoroughly before installation.  
Use of a pressure reducer when static pressure is higher than 5 bar to avoid damage to the product.

## TECHNISCHE WARNUNG

Spülen Sie die Leitungen vor dem Einbau.  
Wenn Wasserdruck größer als 5 bar ist, bitte reduzieren Sie den Systemdruck, um Beschädigung des Produkt zu verhindern.

## ADVERTENCIA TÉCNICA

Los tubos tienen que ser enjuagados a fondo antes de la instalación.  
En caso de presión estática mayor de 5 bar, se recomienda el uso de un adaptador de presión para evitar daños en el producto.

## ADVERTISSEMENTS TECHNIQUES

Rincer les tuyaux avant l'installation.  
En cas de pressions statique de plus de 5 bar, nous vous recommandons d'installer un réducteur de pression pour éviter des dommages à le produit.

## PORTATE / FLOW RATE

BAR	l/min	gpm
1	22,8	6.0
2	29,3	7.7
3*	33,9	9.0
4	38,8	10.2
5	42,4	11.2

\* Pressione consigliata  
Recommended pressure

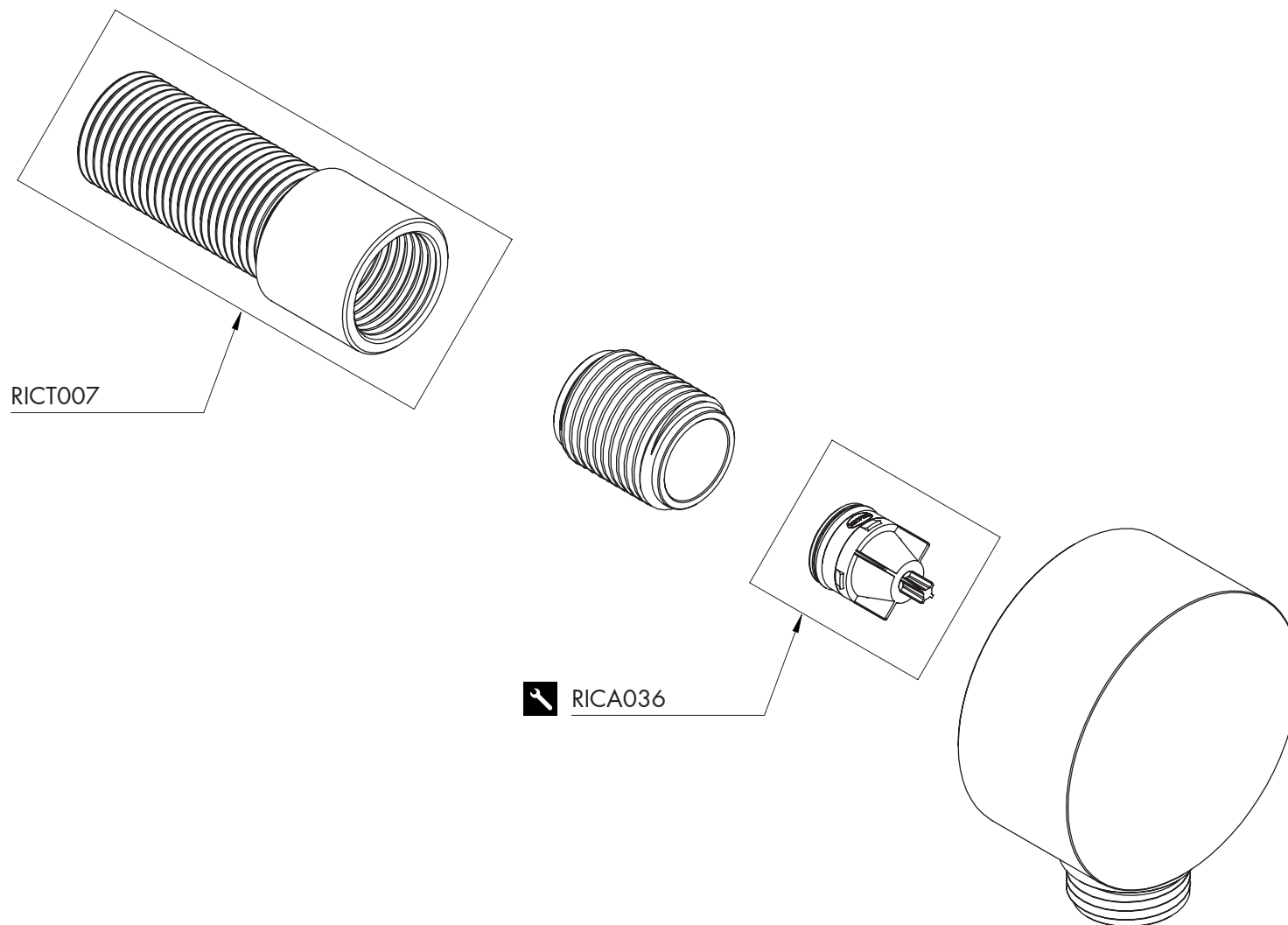
🌡️ max. 70 °C  
🌡️ max. 158 °F

**CEA**

## RICAMBI / SPARE PARTS


RICA036 Valvola di non ritorno / *Check valve*

RICT007 Raccordo / *Fitting*



## LEGENDA / LEGEND

ICONE / ICONS

 Utensile incluso nel ricambio  
*Tool included in spare part*