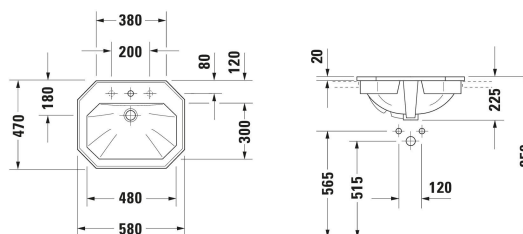


**1930 Series Built-in basin # 0476580000**

| &lt; 580 mm &gt; |



Built-in basin	Dimension	Weight	Order number
Washbasin version: Installation, 580x470 mm, Tap hole platform: Yes, Overflow: Yes, Type of mounting: counter top			
<b>Colors</b>			
00 White Alpin			
<b>Variant</b>			
<ul style="list-style-type: none"> <li>● ● ● White High Gloss, Number of faucet holes per wash area: 1</li> </ul>	580x225 mm	14.700 kg	0476580000
Sanitary ceramics with the special WonderGliss surface finish will remain clean and attractive-looking for a long time to come. When ordering WonderGliss please add a "1" as eleventh digit to the model number.			
<b>Accessory</b>			
Push-open waste Suitable for washbasin with overflow, Ø 63,5 mm	Ø 63.5 mm	0.35 kg	005052
<b>Recommended faucets</b>			
Single lever basin mixer M Ceramic cartridge, Height: 175 mm, Spout reach: 113 mm, Connection type for water supply connection: Flexible connecting hoses, Dimension of connection hose: 3/8", Spray mode: Normal spray, Aerator adjustable, recommended operating pressure: 1 - 5 bar, Noise class: I, 143 x 41 mm	143 x 41 mm		C11020001
Single lever basin mixer M Chrome, Ceramic cartridge, Height: 170 mm, Spout reach: 139 mm, Connection type for water supply connection: Flexible connecting hoses, Dimension of connection hose: 3/8", Spray mode: Normal spray, Aerator adjustable, Temperature limit adjustable, recommended operating pressure: 1 - 5 bar, Noise class: I, 175 x 41 mm	175 x 41 mm		B11020001
Single lever basin mixer M Chrome, Ceramic cartridge, Height: 165 mm, Spout reach: 138,5 mm, Connection type for water supply connection: Flexible connecting hoses, Dimension of connection hose: 3/8", Spray mode: Normal spray, Aerator adjustable, Temperature limit adjustable, Noise class: I, 175 x 41 mm	175 x 41 mm		B21020001

<p>Single lever basin mixer L Ceramic cartridge, Height: 262 mm, Spout reach: 136 mm, Connection type for water supply connection: Flexible connecting hoses, Dimension of connection hose: 3/8", Spray mode: Normal spray, Aerator adjustable, recommended operating pressure: 1 - 5 bar, Noise class: I, 166 x 40 mm</p>	166 x 40 mm	C11030001
<p>Single lever basin mixer Ceramic cartridge, Height: 74 mm, Connection type for water supply connection: Basic Set, Spray mode: Normal spray, Aerator adjustable, Including trim parts, recommended operating pressure: 1 - 5 bar, Noise class: I, Unified Water Label (UWL) Class: 1, 173 x 174 mm</p>	173 x 174 mm	C11070003
<p>Single lever basin mixer Ceramic cartridge, Height: 74 mm, Connection type for water supply connection: Basic Set, Spray mode: Normal spray, Aerator adjustable, Including trim parts, recommended operating pressure: 1 - 5 bar, Noise class: I, Unified Water Label (UWL) Class: 1, 173 x 225 mm</p>	173 x 225 mm	C11070004
<p>Single lever basin mixer S Chrome, Ceramic cartridge, Height: 125 mm, Spout reach: 95 mm, Connection type for water supply connection: Flexible connecting hoses, Dimension of connection hose: 3/8", Spray mode: Normal spray, Aerator, Temperature limit adjustable, recommended operating pressure: 1 - 5 bar, Unified Water Label (UWL) Class: 1, 137 x 43 mm</p>	137 x 43 mm	A11010002
<p>Single lever basin mixer M Chrome, Ceramic cartridge, Height: 167 mm, Spout reach: 107 mm, Connection type for water supply connection: Flexible connecting hoses, Dimension of connection hose: 3/8", Spray mode: Normal spray, Aerator, Temperature limit adjustable, recommended operating pressure: 1 - 5 bar, Unified Water Label (UWL) Class: 1, 149 x 43 mm</p>	149 x 43 mm	A11020001
<p>2 Hole basin mixer electronic M Height: 157 mm, Spout reach: 148 mm, Temperature control: Ceramic cartridge, Aerator adjustable, Connection type for water supply connection: Flexible connecting hoses, Dimension of connection hose: 3/8", Temperature limit adjustable, Flow rate (3 bar): 5 l/min, Adjustable water run time, Hygienic flush, Spray mode: Normal spray, Incl. spout, Incl. control unit, Incl. operating unit, Operation type: Controller, without pop-up waste set, Electronic control: power supply, Protection type: IPX4, 198 x 45 mm</p>	198 x 45 mm	D11100008
<p>2 Hole basin mixer electronic M Height: 157 mm, Spout reach: 148 mm, Temperature control: Ceramic cartridge, Aerator adjustable, Connection type for water supply connection: Flexible connecting hoses, Dimension of connection hose: 3/8", Temperature limit adjustable, Flow rate (3 bar): 5 l/min, Adjustable water run time, Hygienic flush, Spray mode: Normal spray, Incl. spout, Incl. control unit, Incl. operating unit, Operation type: Controller, without pop-up waste set, Electronic control: power supply, Protection type: IPX4, 198 x 45 mm</p>	198 x 45 mm	D11100007
<p>2 Hole basin mixer M Height: 157 mm, Spout reach: 148 mm, Temperature control: Ceramic cartridge, Aerator adjustable, Connection type for water supply connection: Flexible connecting hoses, Dimension of connection hose: 3/8", Flow rate (3 bar): 5 l/min, Spray mode: Normal spray, Operation type: Mechanical, without pop-up waste set, 198 x 45 mm</p>	198 x 45 mm	D11120002
<p>2 Hole basin mixer M Height: 157 mm, Spout reach: 148 mm, Temperature control: Ceramic cartridge, Aerator adjustable, Connection type for water supply connection: Flexible connecting hoses, Dimension of connection hose: 3/8", Flow rate (3 bar): 5 l/min, Spray mode: Normal spray, Operation type: Mechanical, without pop-up waste set, 198 x 45 mm</p>	198 x 45 mm	D11120009

**1930 Series Built-in basin # 0476580000**

**|< 580 mm >|**

---

*All drawings contain the necessary measurements which are subject to standard tolerances. They are stated in mm and are non-binding. Exact measurements, in particular for customised installation scenarios, can only be taken from the finished piece.*