
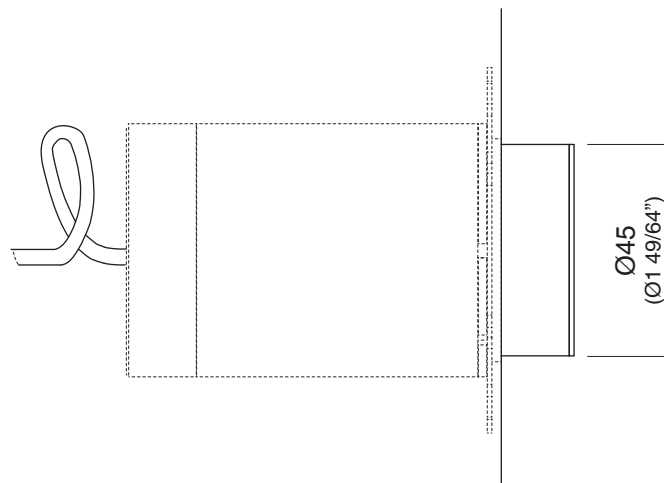


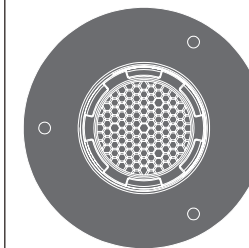
LED RGBW
 POWER SUPPLY 350 mA
 NOMINAL POWER 4,2 W
 WHITE LED TEMPERATURE 3000 K
 MINIMAL FLUX WHITE LED 120 lm
 LED VIEWING ANGLE TYPICAL 130°

INC18 



Ø45
 (Ø1 49/64")

FRE162 _REV13



FRE162/FREE IDEAS

AISI 316L STAINLESS STEEL

Soffione doccia ad incasso con estremità in Delrin®, getto puro e LED cromoterapia

Built-in shower head with Delrin® end, pure free flow jet and LED chromotherapy

CEADESIGN STUDIO

PRODOTTI CORRELATI / RELATED PRODUCTS

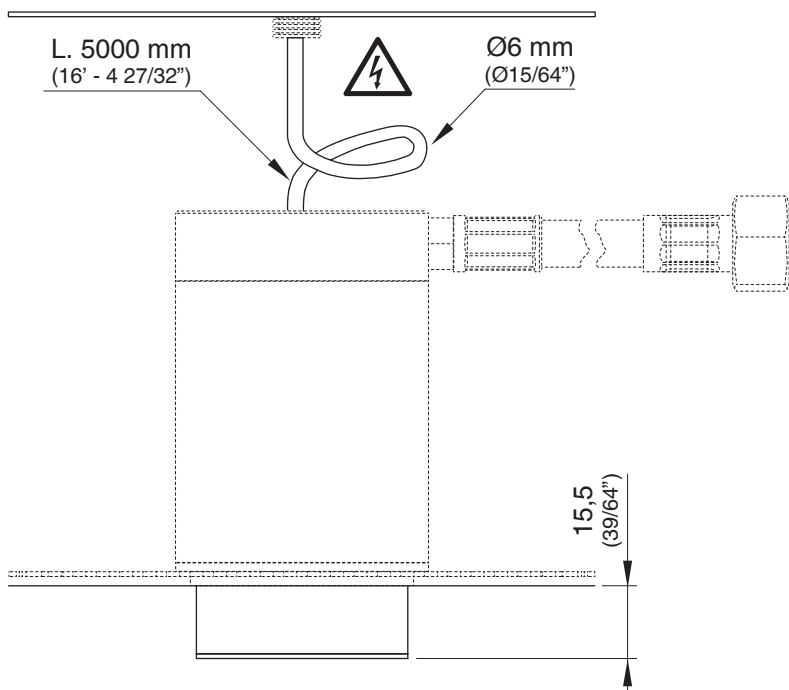
BOT01 - ELC01



Prodotto che necessita di collegamento elettrico
Product that needs electrical connection



Prodotto che necessita di parte incasso
Product that needs built-in part



L. 5000 mm
 (16' - 4 27/32")

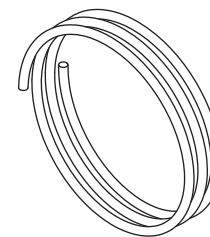
Ø6 mm
 (Ø15/64")






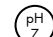
15.5
 (39/64")

INCLUDED PARTS:

EXTENSION
 L. 5000 mm
 (16' - 4 27/32")



MANUTENZIONE / MAINTENANCE

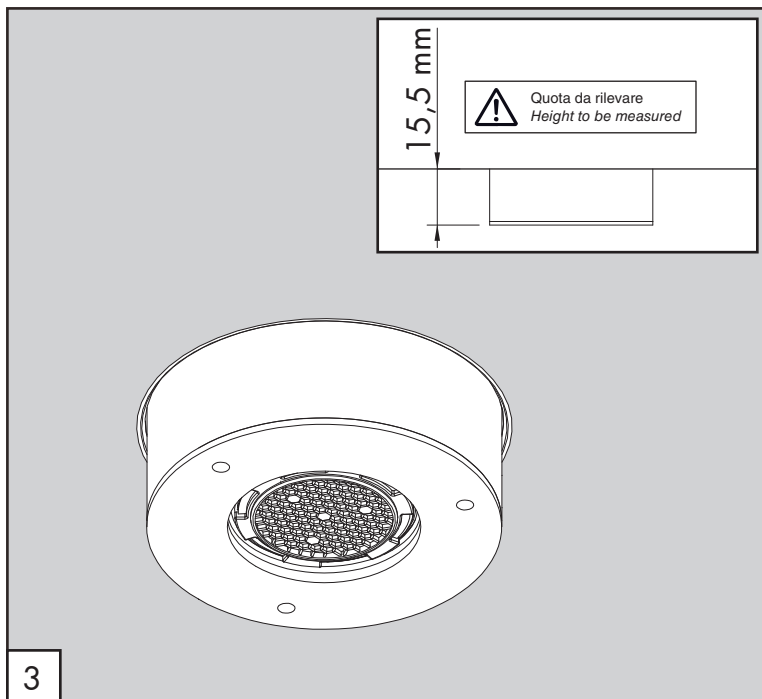
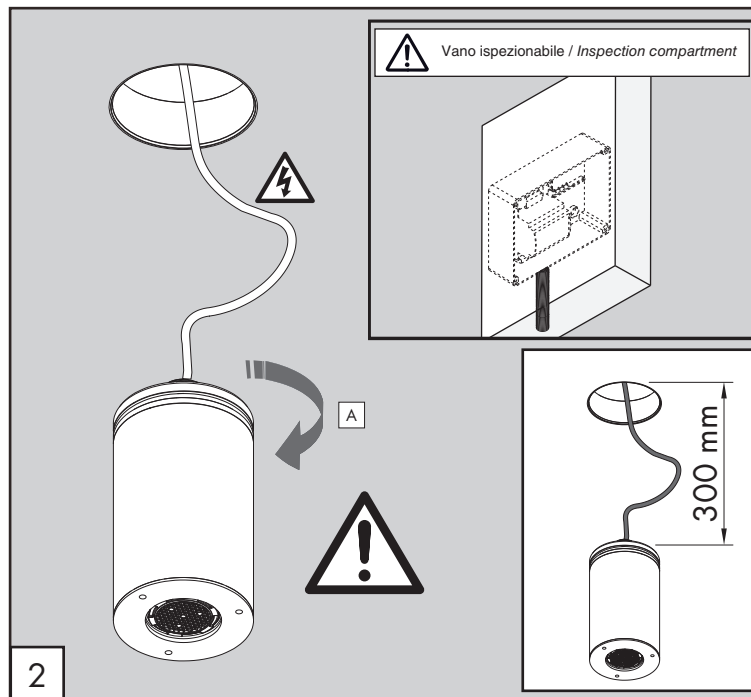
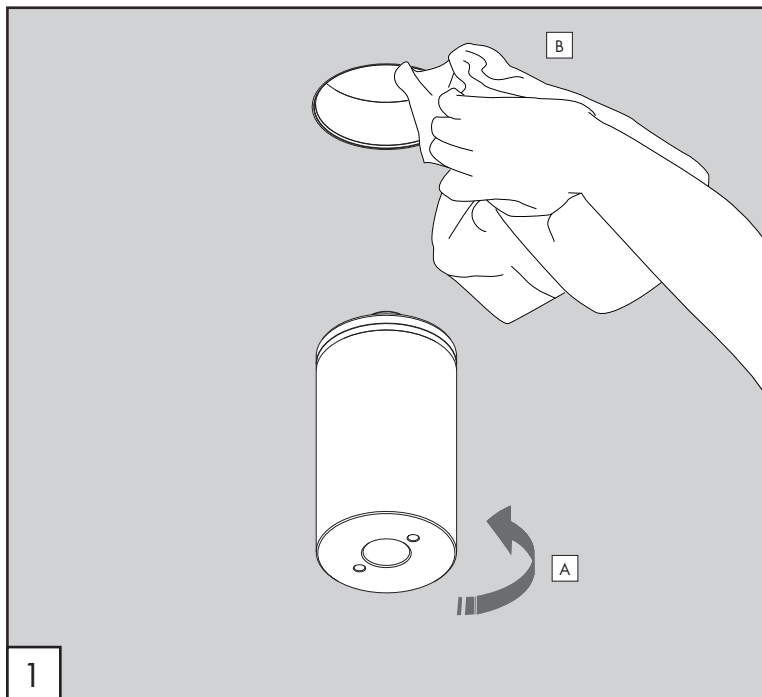
NON UTILIZZARE DO NOT USE		acido clorico e muriatico <i>cloric and muriatic acid</i>
		acido fluoridrico <i>hydrofluoric acid</i>
		ipoclorito di sodio <i>chlorine bleach</i>
UTILIZZARE TO USE		detergente a pH neutro <i>neutral pH detergent</i>

Questi disegni sono proprietà di CEADESIGN SRL s.u. pertanto non potranno essere utilizzati e/o comunicati a terzi, anche in forma parziale, senza preventiva autorizzazione. CEADESIGN SRL s.u. si riserva il diritto di apportare modifiche ai disegni al fine di migliorare il prodotto.

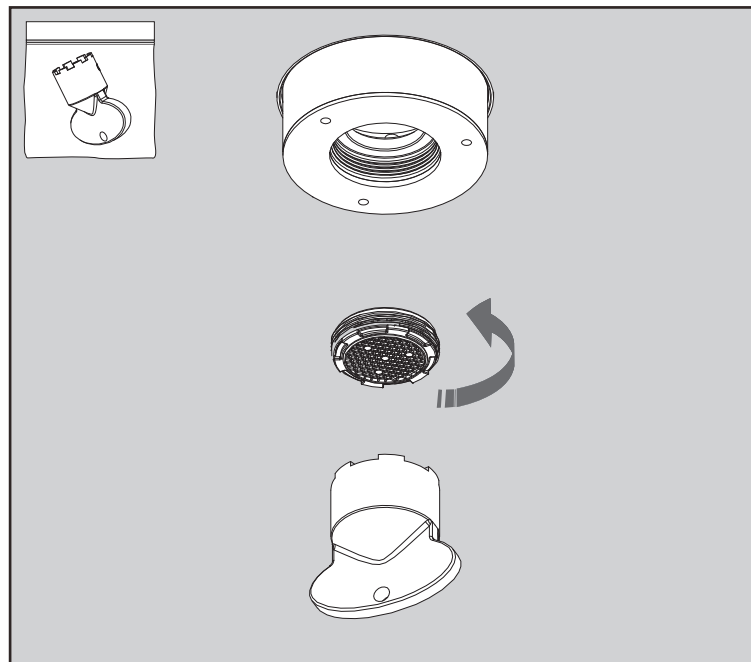
CEADESIGN SRL s.u. has the property rights on these drawings, therefore they cannot be used and/or transferred to third party, even in partial form, without any prior authorization. Furthermore CEADESIGN SRL s.u. reserves the right to apply any change to these drawings in order to upgrade the product.

CEA

ceadesign.it



PULIZIA / CLEANING / SAUBEKEIT / LIMPIEZA / NETTOYAGE



AVVERTENZE TECNICHE

Risciacquare bene le tubazioni prima del montaggio ed evitare sbalzi di pressione.

Mantenere integro il filo elettrico durante la fase di montaggio. Realizzare a regola d'arte i collegamenti elettrici al fine di non compromettere la corretta alimentazione del Led.

TECHNICAL WARNINGS

The pipes have to be rinsed thoroughly before installation to avoid pressure differences.

Please maintain intact the electric cable during the assembling process.

Please realize the electrical connection compliant to regulation to avoid any compromise to the LED electricity supply.

TECHNISCHE WARNUNG

Spülen Sie die Leitungen vor dem Einbau und verhindern Sie Wasserdruckwechsel.

Während der Montage, halten Sie das Kabel unversehrt.

Die elektrischen Verbindungen müssen einwandfrei realisiert werden, um die korrekte Versorgung der LED nicht zu gefährden.

ADVERTENCIA TÉCNICA

Purgar bien las tuberías antes de la instalación y evitar cambios bruscos de presión.

Mantener íntegro el hilo eléctrico durante la instalación.

Realizar correctamente las conexiones eléctricas para no comprometer la correcta alimentación del Led.

ADVERTISSEMENTS TECHNIQUES

Rincer les tuyaux avant l'installation. Eviter grandes différences de pression.

Préservez l'intégrité du câble électrique en phase de montage.

Réalisez à la lettre les branchements électriques afin de ne pas compromettre la correcte alimentation LED.

TEMPERATURA DI ESERCIZIO / WORKING TEMPERATURE

max. 70 °C
 max. 158 °F

Le portate indicate sono alla pressione consigliata di 3 bar

The indicated flow rates are at the recommended pressure of 3 bar

CARATTERISTICHE TECNICHE / TECHNICAL FEATURES

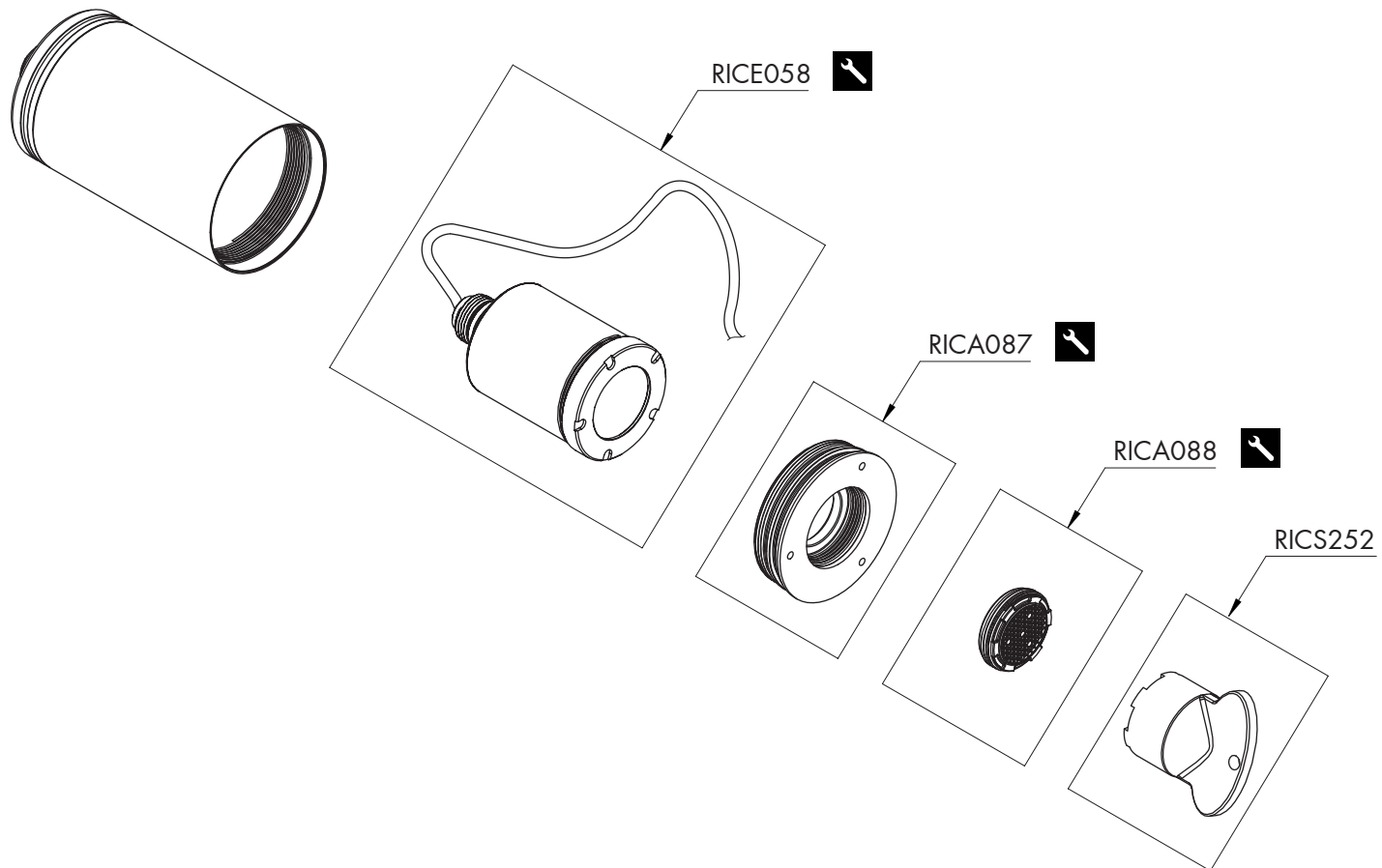
Portata minima ottimale Optimum minimum flow rate	l/min 8	gpm 2.1
Peso prodotto senza acqua Product weight without water *	Kg 0,33	

* Peso senza parte ad incasso / Weight without built-in part

FRE162 _REV13


RICAMBI / SPARE PARTS

RICA087	Testa soffione / <i>Head shower disk</i>
RICA088	Aeratore / <i>Aerator</i>
RICE058	Componente elettrico 3000 K <i>Electrical component 3000 K</i>
RICS252	Chiave aeratore / <i>Key for aerator</i>



LEGENDA / LEGEND

ICONE / ICONS

 Utensile incluso nel ricambio
Tool included in spare part

CEA