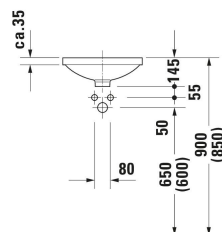
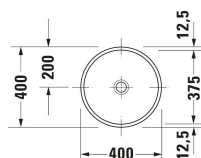


Architec Built-in basin # 0319370000

| < Ø 400 mm > |



Built-in basin	Dimension	Weight	Order number
Washbasin version: Installation, 400x400 mm, Tap hole platform: No, Overflow: No, Type of mounting: undercounter, Incl. fixings for installation in wooden consoles, Underside glazed			
Colors			
00 White Alpin			
Variant			
☒ Washbasin version: undercounter, White High Gloss	400x145 mm	5.450 kg	0319370000
Accessory			
Slotted waste washbasin without overflow, Diameter: 72 mm	Ø 72 mm	0.55 kg	005038
Mounting Type of installation: In natural stone console, Suitable for Built-in basin	10 x 40 mm	0.2 kg	005028
Recommended faucets			
Single lever basin mixer Ceramic cartridge, Height: 74 mm, Connection type for water supply connection: Basic Set, Spray mode: Normal spray, Aerator adjustable, Including trim parts, recommended operating pressure: 1 - 5 bar, Noise class: I, Unified Water Label (UWL) Class: 1, 173 x 174 mm	173 x 174 mm		C11070003
Single lever basin mixer L Ceramic cartridge, Height: 262 mm, Spout reach: 136 mm, Connection type for water supply connection: Flexible connecting hoses, Dimension of connection hose: 3/8", Spray mode: Normal spray, Aerator adjustable, recommended operating pressure: 1 - 5 bar, Noise class: I, 165 x 41 mm	165 x 41 mm		C11030002
Single lever basin mixer Ceramic cartridge, Height: 74 mm, Connection type for water supply connection: Basic Set, Spray mode: Normal spray, Aerator adjustable, Including trim parts, recommended operating pressure: 1 - 5 bar, Noise class: I, Unified Water Label (UWL) Class: 1, 173 x 225 mm	173 x 225 mm		C11070004
Single lever basin mixer XL Chrome, Ceramic cartridge, Height: 295 mm, Spout reach: 180 mm, Connection type for water supply connection: Flexible connecting hoses, Dimension of connection hose: 3/8", Spray mode: Normal spray, Aerator, Temperature limit adjustable, recommended operating pressure: 1 - 5 bar, Unified Water Label (UWL) Class: 1, 222 x 43 mm	222 x 43 mm		A11040001

<p>Single lever basin mixer XL Chrome, Ceramic cartridge, Height: 295 mm, Spout reach: 180 mm, Connection type for water supply connection: Flexible connecting hoses, Dimension of connection hose: 3/8", Spray mode: Normal spray, Aerator, Temperature limit adjustable, recommended operating pressure: 1 - 5 bar, Unified Water Label (UWL) Class: 1, 222 x 43 mm</p>	222 x 43 mm	A11040002
<p>2 Hole basin mixer electronic XL Height: 253 mm, Spout reach: 180 mm, Temperature control: Ceramic cartridge, Aerator adjustable, Connection type for water supply connection: Flexible connecting hoses, Dimension of connection hose: 3/8", Temperature limit adjustable, Flow rate (3 bar): 5 l/min, Adjustable water run time, Hygienic flush, Spray mode: Normal spray, Incl. spout, Incl. control unit, Incl. operating unit, Operation type: Controller, without pop-up waste set, Electronic control: power supply, Protection type: IPX4, 230 x 45 mm</p>	230 x 45 mm	D11110008
<p>2 Hole basin mixer electronic XL Height: 253 mm, Spout reach: 180 mm, Temperature control: Ceramic cartridge, Aerator adjustable, Connection type for water supply connection: Flexible connecting hoses, Dimension of connection hose: 3/8", Temperature limit adjustable, Flow rate (3 bar): 5 l/min, Adjustable water run time, Hygienic flush, Spray mode: Normal spray, Incl. spout, Incl. control unit, Incl. operating unit, Operation type: Controller, without pop-up waste set, Electronic control: power supply, Protection type: IPX4, 230 x 45 mm</p>	230 x 45 mm	D11110007
<p>2 Hole basin mixer XL Height: 253 mm, Spout reach: 180 mm, Temperature control: Ceramic cartridge, Aerator adjustable, Connection type for water supply connection: Flexible connecting hoses, Dimension of connection hose: 3/8", Flow rate (3 bar): 5 l/min, Spray mode: Normal spray, Operation type: Mechanical, without pop-up waste set, 230 x 45 mm</p>	230 x 45 mm	D11130002
<p>2 Hole basin mixer XL Height: 253 mm, Spout reach: 180 mm, Temperature control: Ceramic cartridge, Aerator adjustable, Connection type for water supply connection: Flexible connecting hoses, Dimension of connection hose: 3/8", Flow rate (3 bar): 5 l/min, Spray mode: Normal spray, Operation type: Mechanical, without pop-up waste set, 230 x 45 mm</p>	230 x 45 mm	D11130009

All drawings contain the necessary measurements which are subject to standard tolerances. They are stated in mm and are non-binding. Exact measurements, in particular for customised installation scenarios, can only be taken from the finished piece.